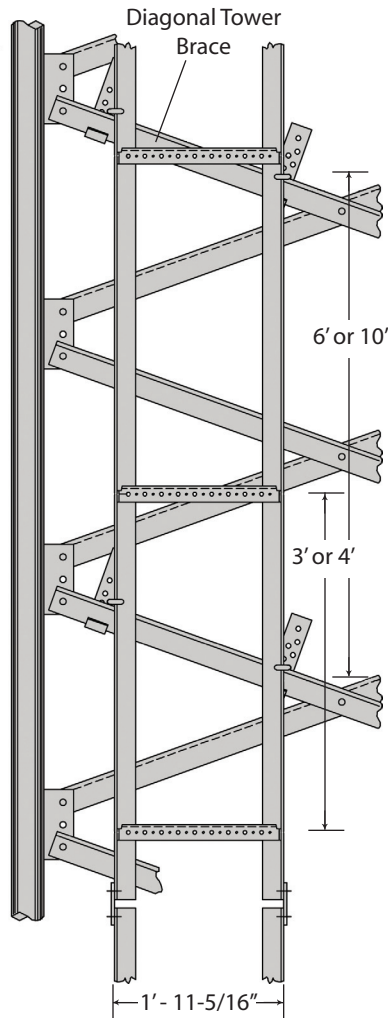
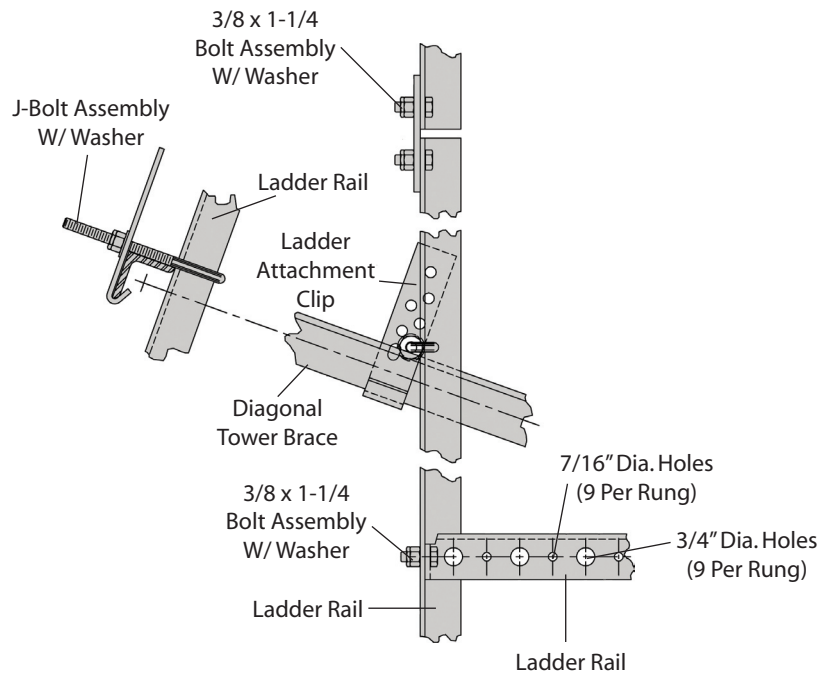


WAVEGUIDE LADDER FACE MOUNTED 9-HOLE



Ladder Elevation



ORDERING INFORMATION

WL20F93KD
20' Waveguide Ladder Section (3')

WL20F94KD
20' Waveguide Ladder Section (4')

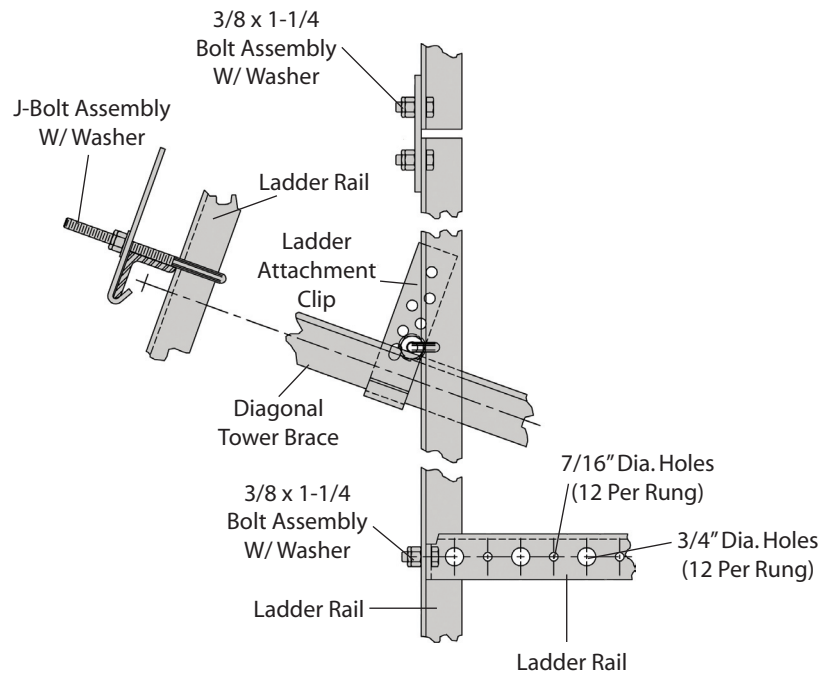
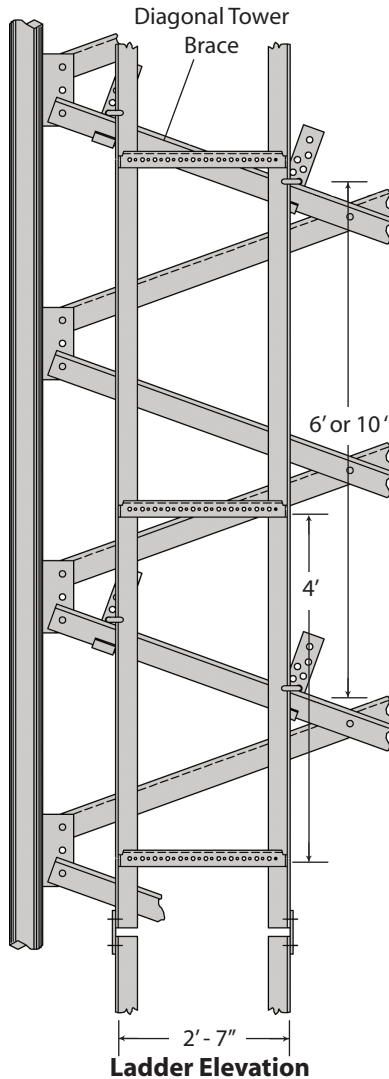
WL10F93KD
10' Waveguide Ladder Section (3')

WL10F94KD
10' Waveguide Ladder Section (4')

Notes:

1. Space ladder clips as shown.
2. The waveguide ladder may require field cutting to the proper length after assembly.
3. Waveguide ladder may be moved horizontally for the proper alignment.
4. Washers are provided for all slotted holes.
5. Waveguide ladder may be mounted inside or outside of tower as required.
6. The waveguide ladder must be offset from the center of the tower when used with a face mounted climbing ladder for required clearances.
7. If circular waveguide is used, threaded adapters, provided by others, may be required to perfectly align waveguides on ladder.

WAVEGUIDE LADDER FACE MOUNTED 12-HOLE



ORDERING INFORMATION

WL20F123KD
20' Waveguide Ladder Section (3')

WL20F124KD
20' Waveguide Ladder Section (4')

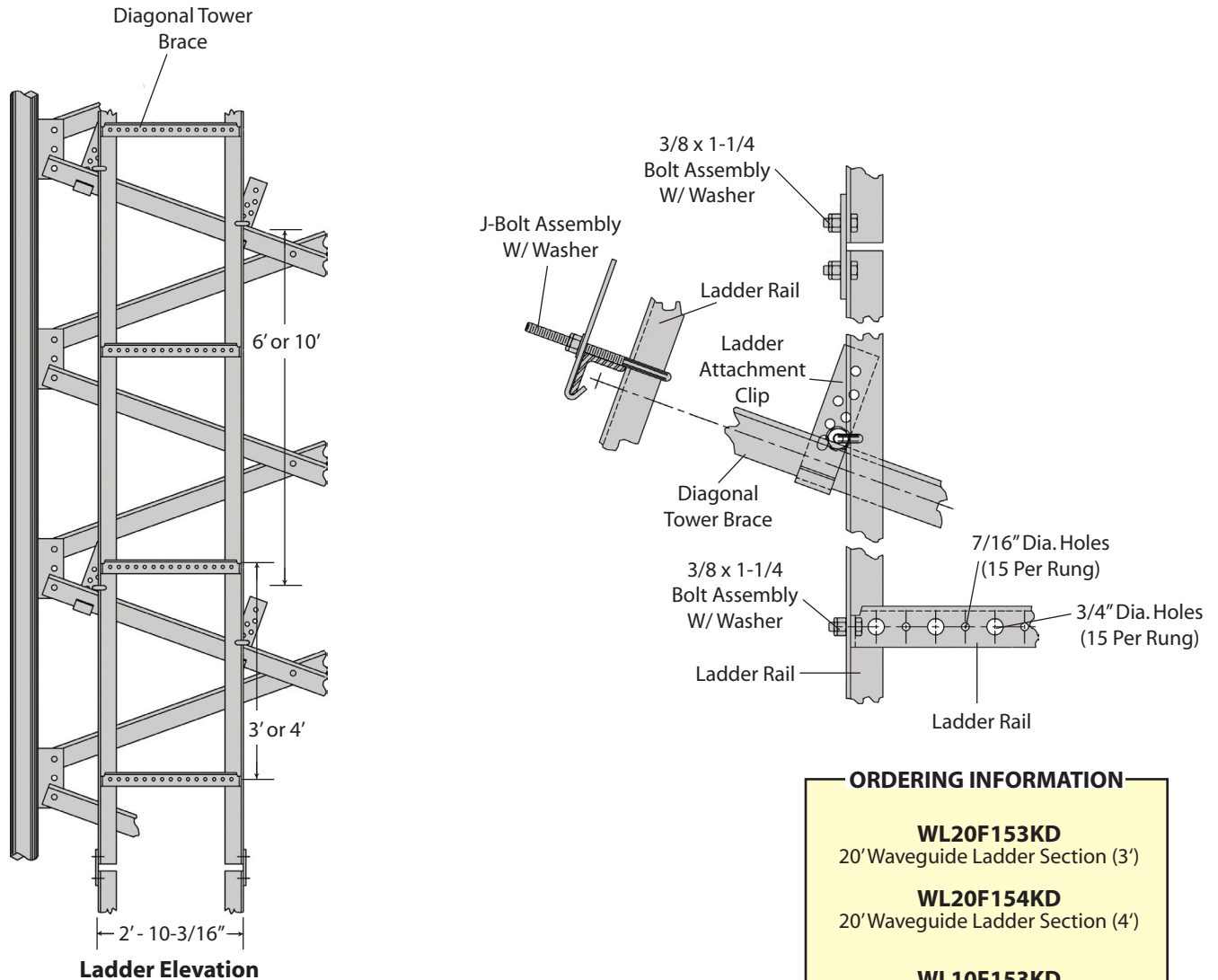
WL10F123KD
10' Waveguide Ladder Section (3')

WL10F124KD
10' Waveguide Ladder Section (4')

Notes:

1. Space ladder clips as shown.
2. The waveguide ladder may require field cutting to the proper length after assembly.
3. Waveguide ladder may be moved horizontally for the proper alignment.
4. Washers are provided for all slotted holes.
5. Waveguide ladder may be mounted inside or outside of tower as required.
6. The waveguide ladder must be offset from the center of the tower when used with a face mounted climbing ladder for required clearances.
7. This assembly is not to be used for angles using material thicker than 3/8"

WAVEGUIDE LADDER FACE MOUNTED 15-HOLE



ORDERING INFORMATION

WL20F153KD

20' Waveguide Ladder Section (3')

WL20F154KD

20' Waveguide Ladder Section (4')

WL10F153KD

10' Waveguide Ladder Section (3')

WL10F154KD

10' Waveguide Ladder Section (4')

Notes:

1. Space ladder clips as shown.
2. The waveguide ladder may require field cutting to the proper length after assembly.
3. Waveguide ladder may be moved horizontally for the proper alignment.
4. Washers are provided for all slotted holes.
5. Waveguide ladder may be mounted inside or outside of tower as required.
6. The waveguide ladder must be offset from the center of the tower when used with a face mounted climbing ladder for required clearances.